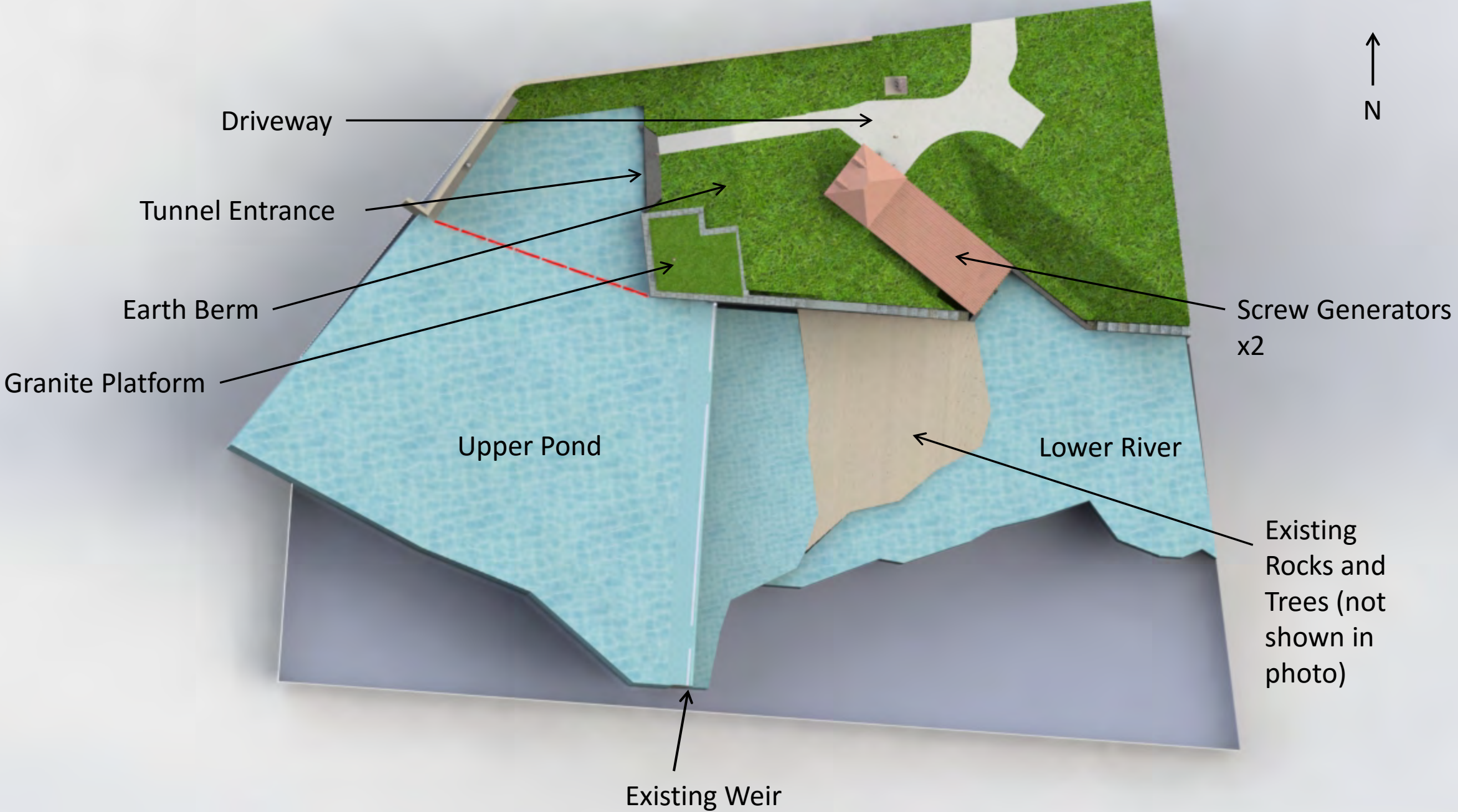


Overhead View of Natick Pond Dam

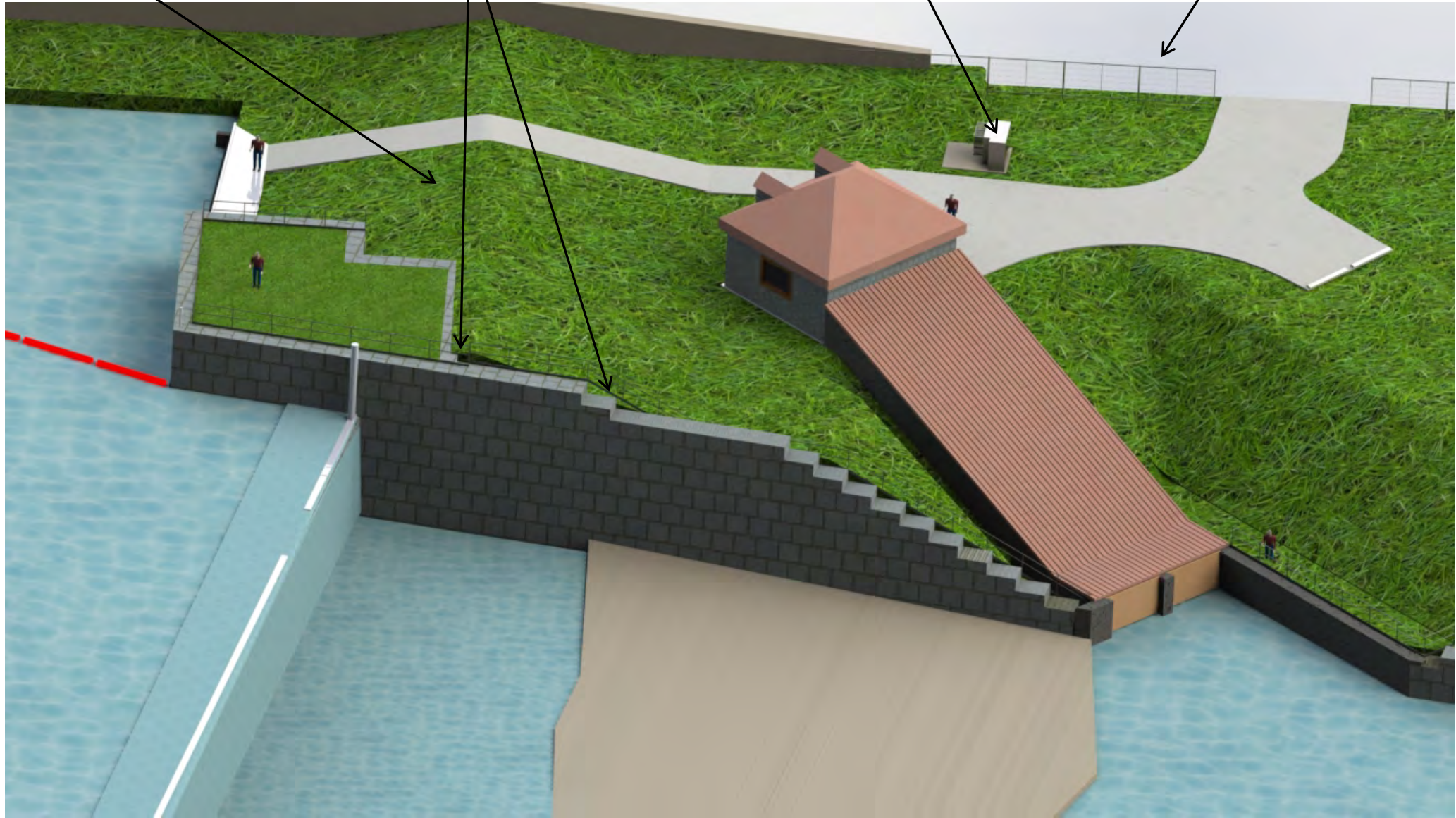


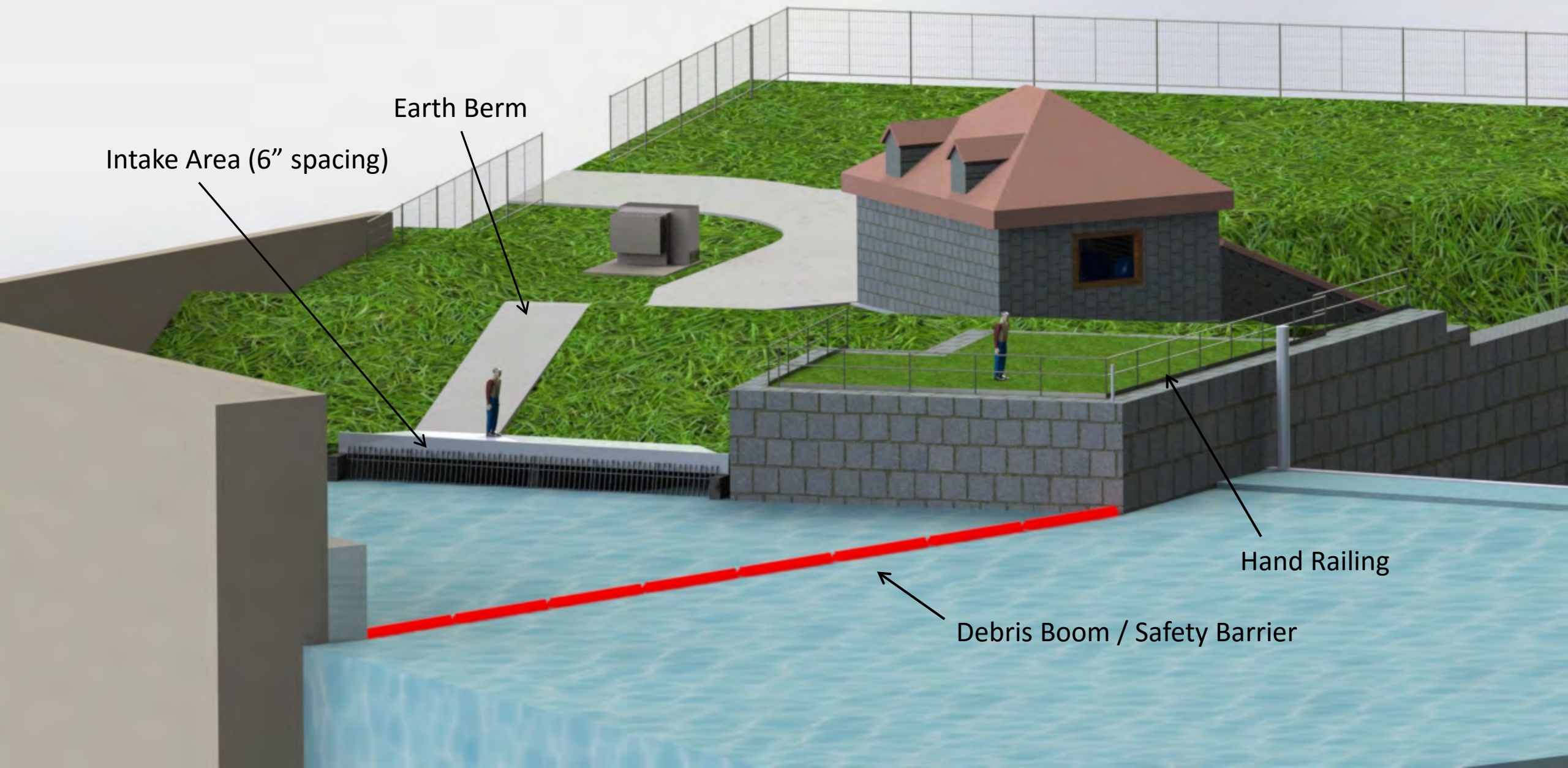
Wall Heightened to retain proposed earth berm (using granite blocks removed from screw outlet.

Transformer (to be screened by trees)

Chain link fence (gate not shown)

Earth Berm



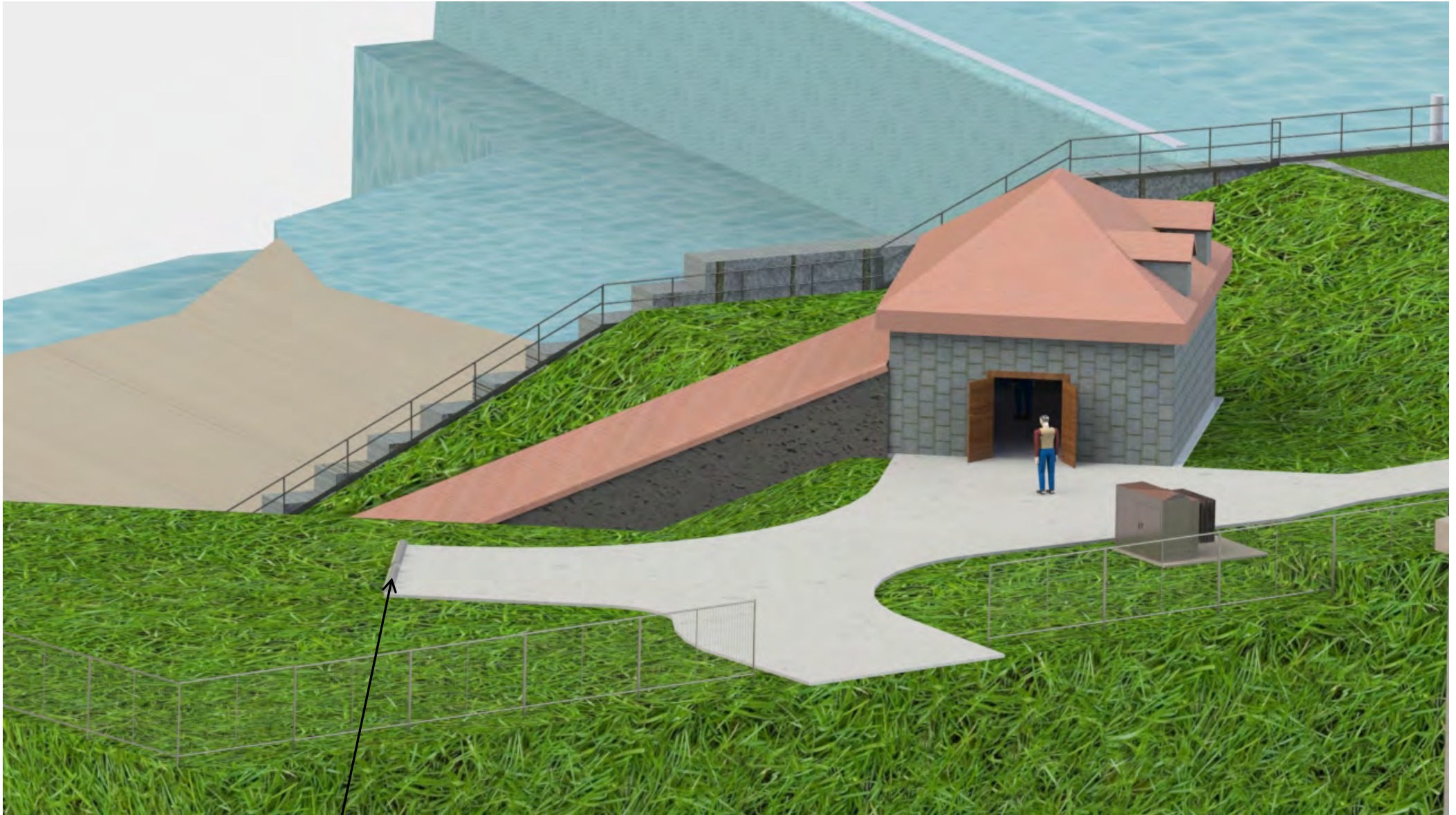


Intake Area (6" spacing)

Earth Berm

Hand Railing

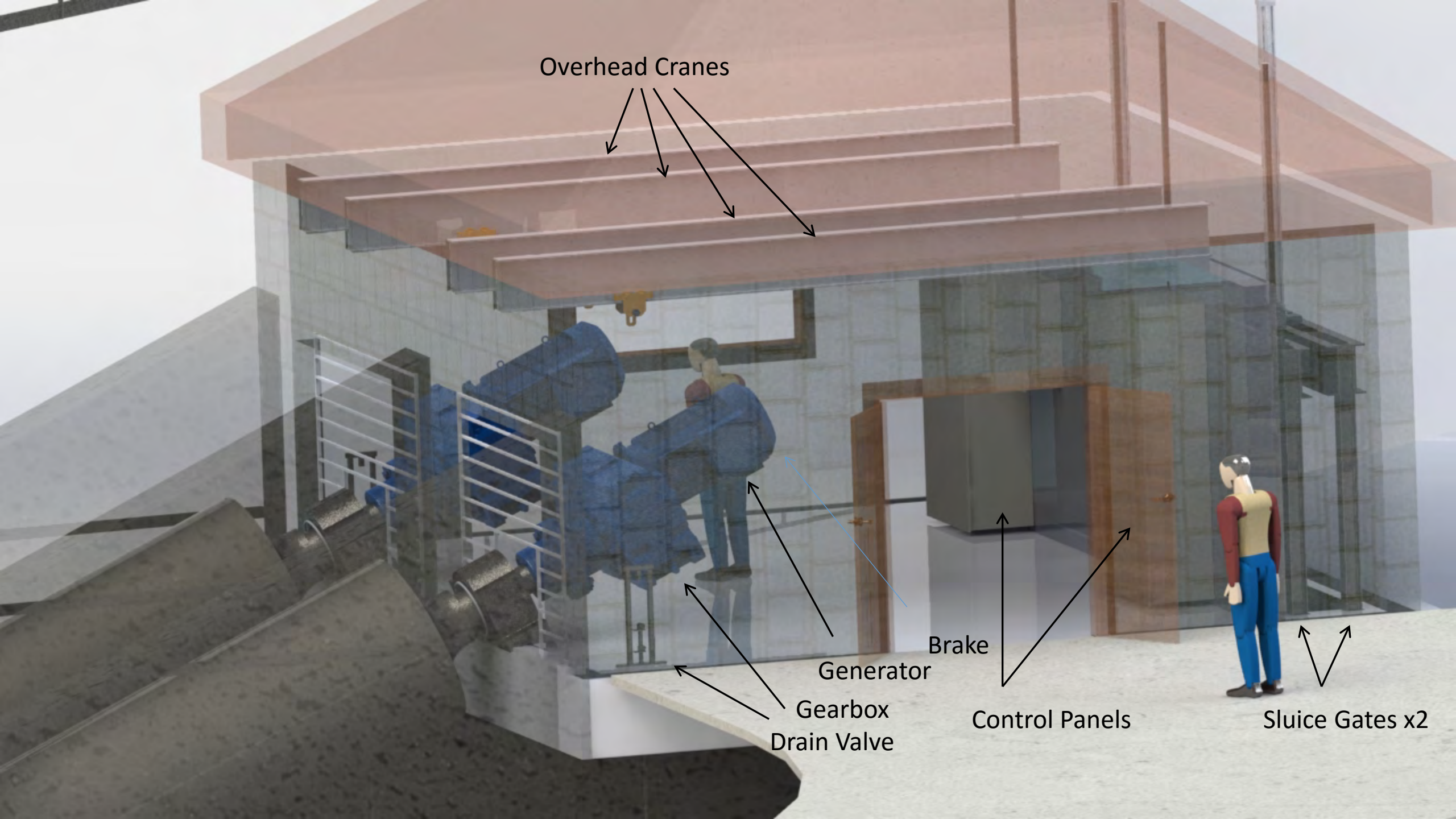
Debris Boom / Safety Barrier



Curb Stops x2

Screw Outlet (stop logs removed on 1 screw for photo only)





Overhead Cranes

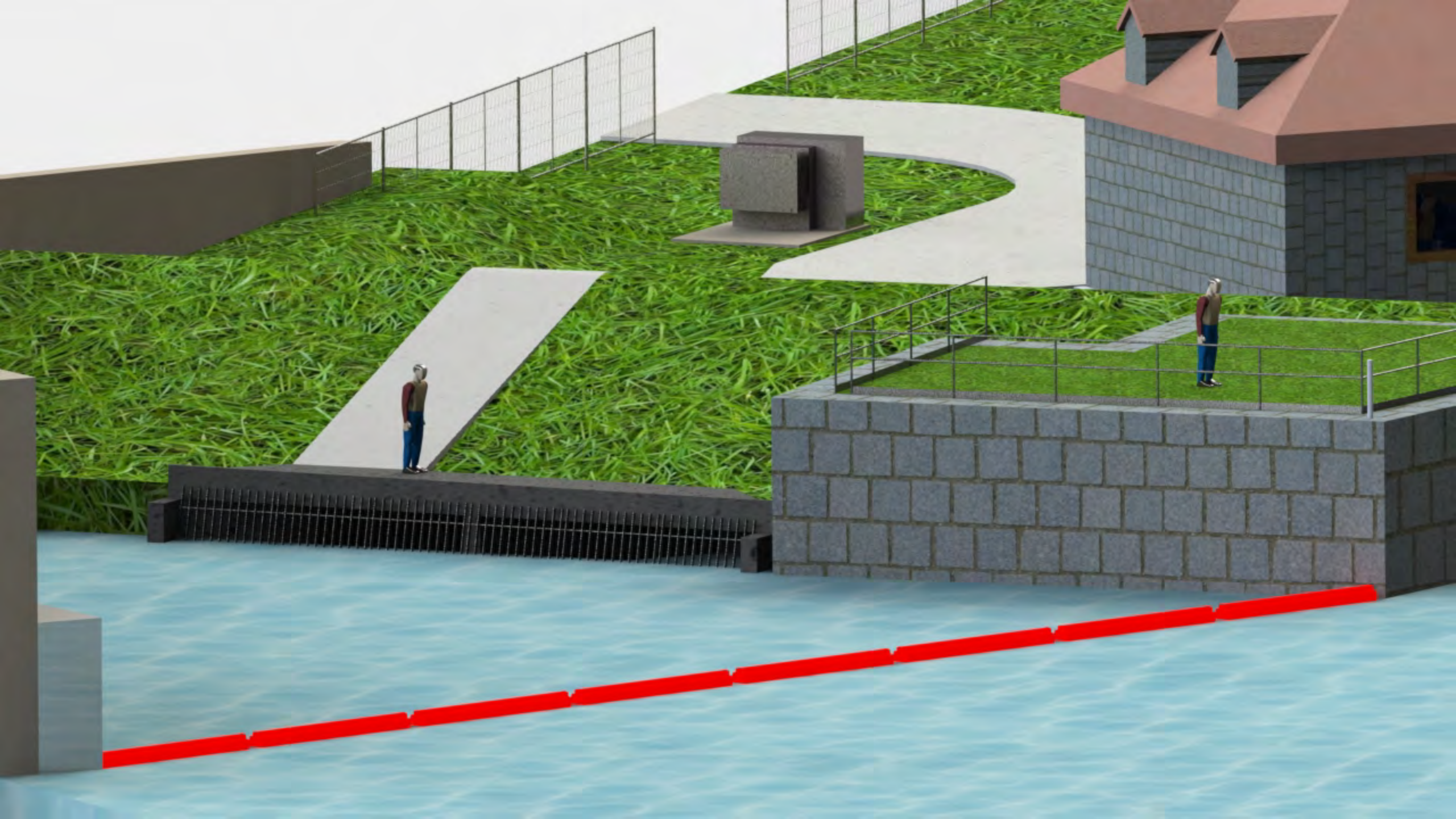
Brake

Generator

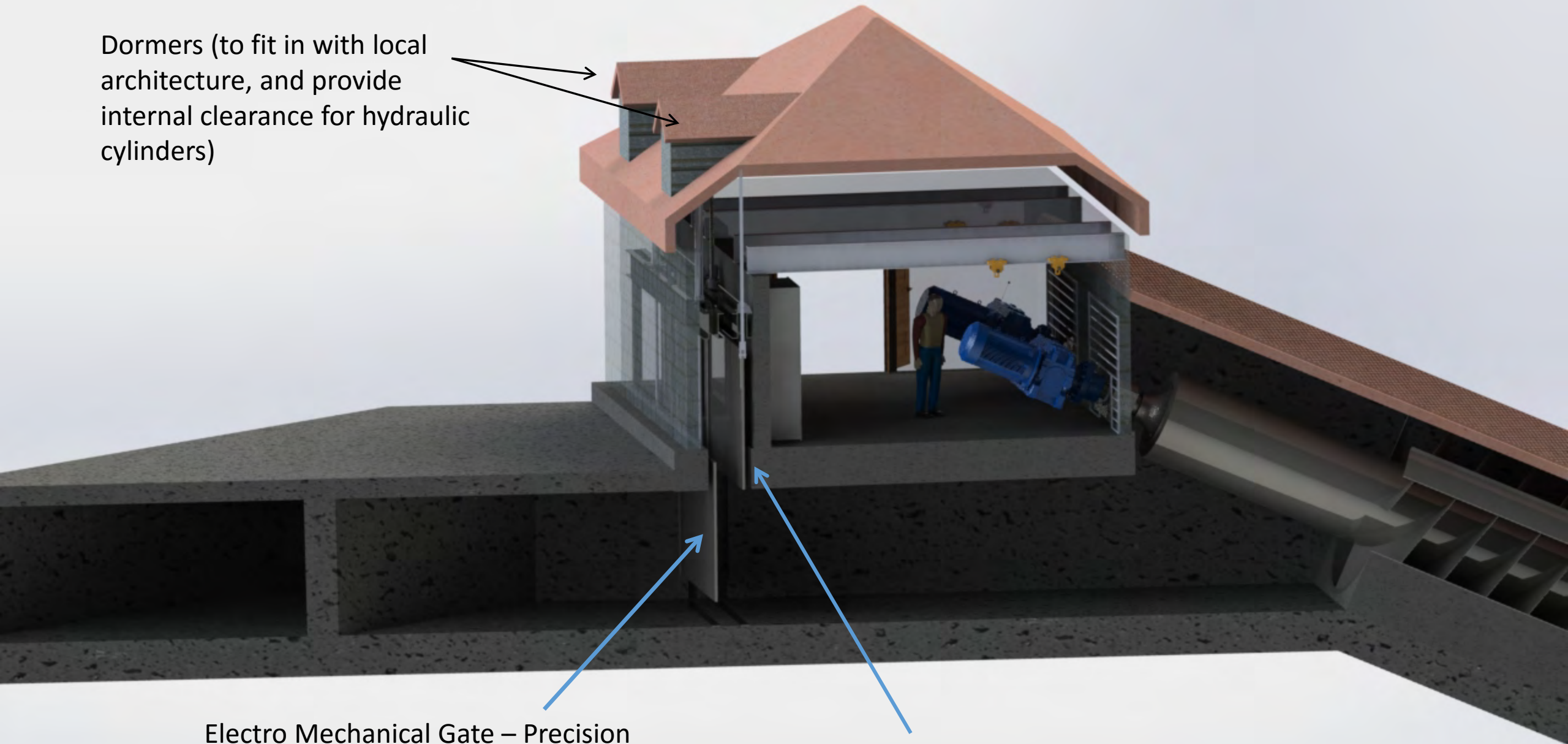
Gearbox
Drain Valve

Control Panels

Sluice Gates x2



Dormers (to fit in with local architecture, and provide internal clearance for hydraulic cylinders)

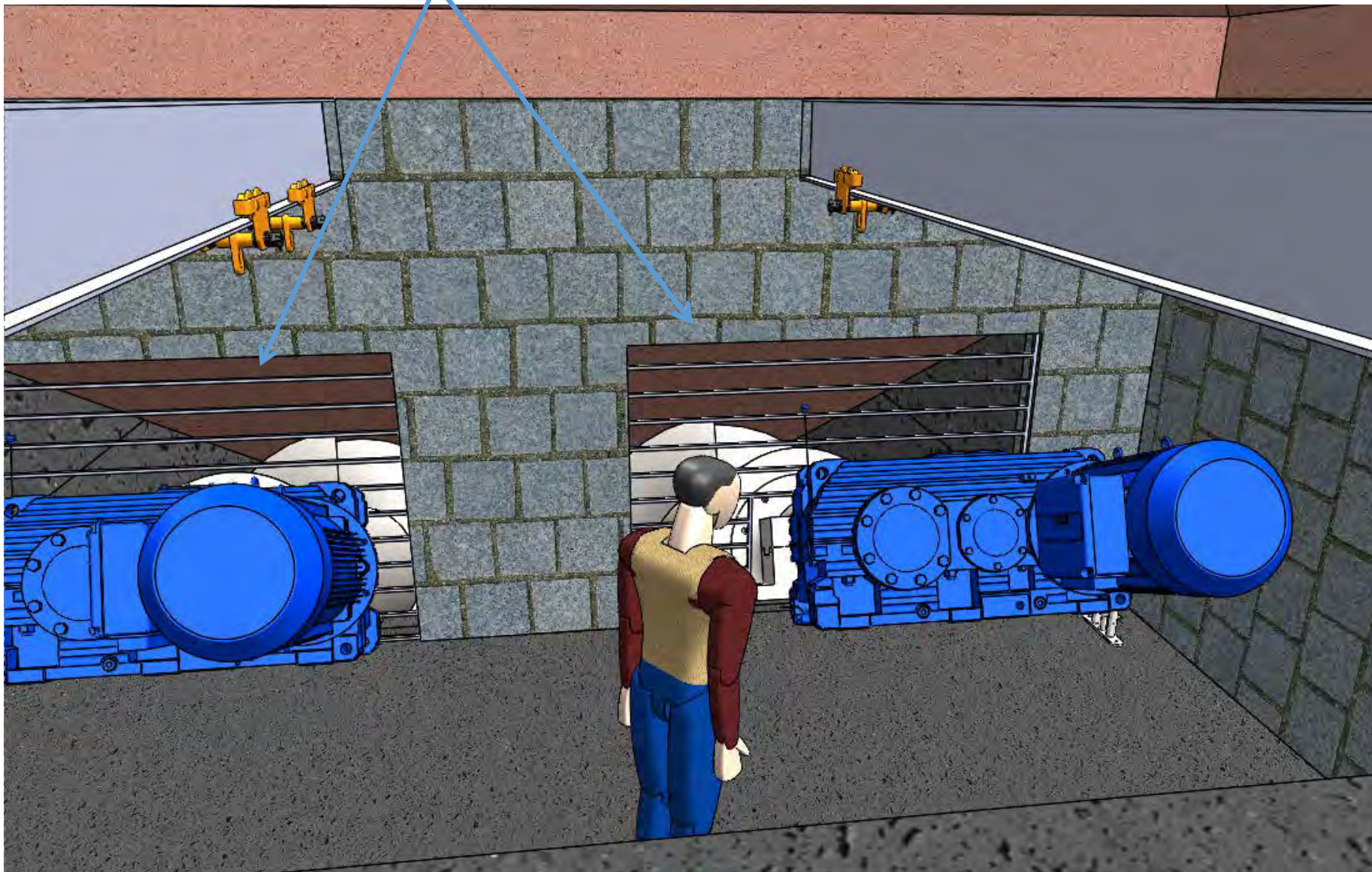


Electro Mechanical Gate – Precision
Water Height Control

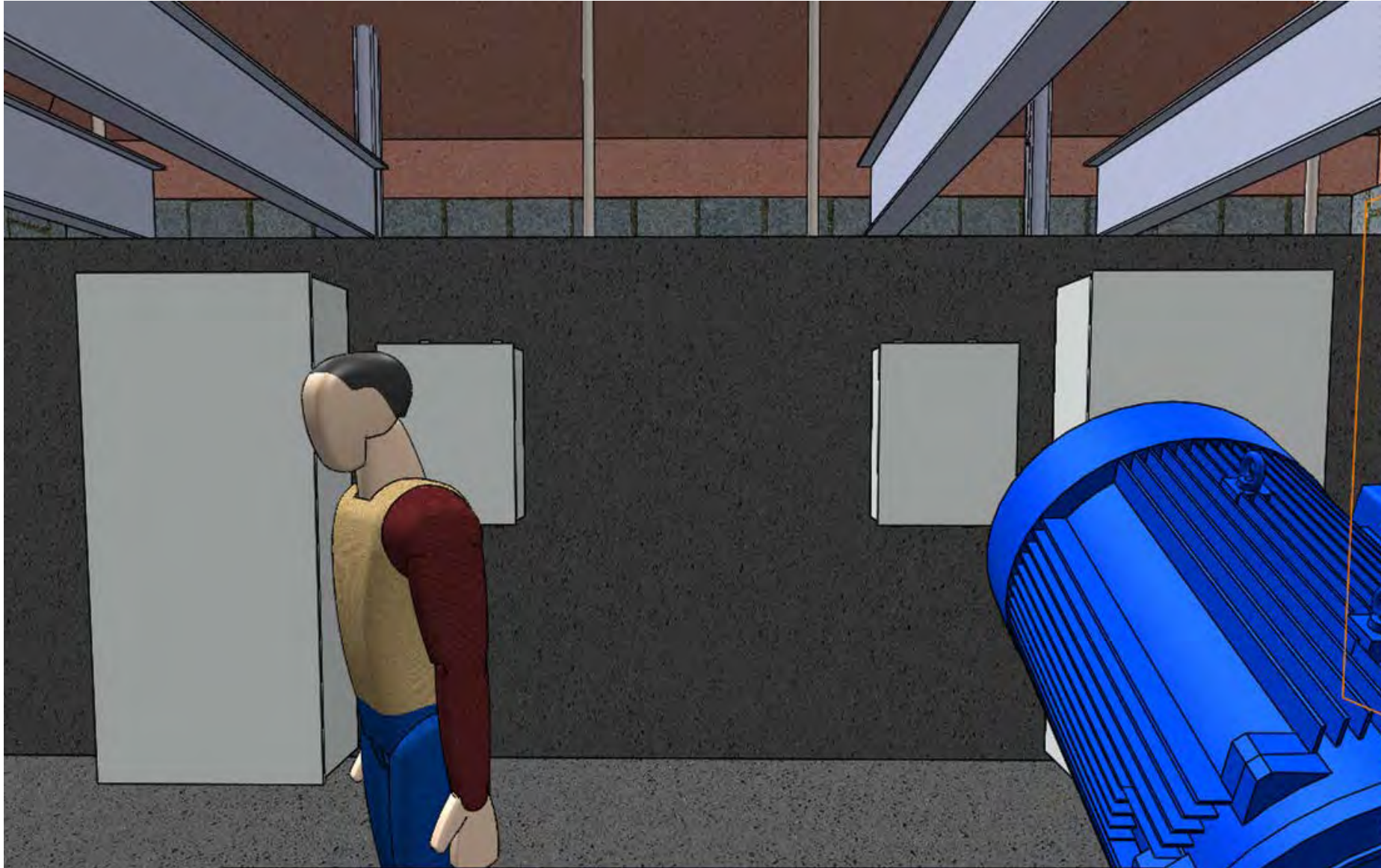
Hydraulic Gate – Fast Closing (5 seconds)

View Inside Generator Room

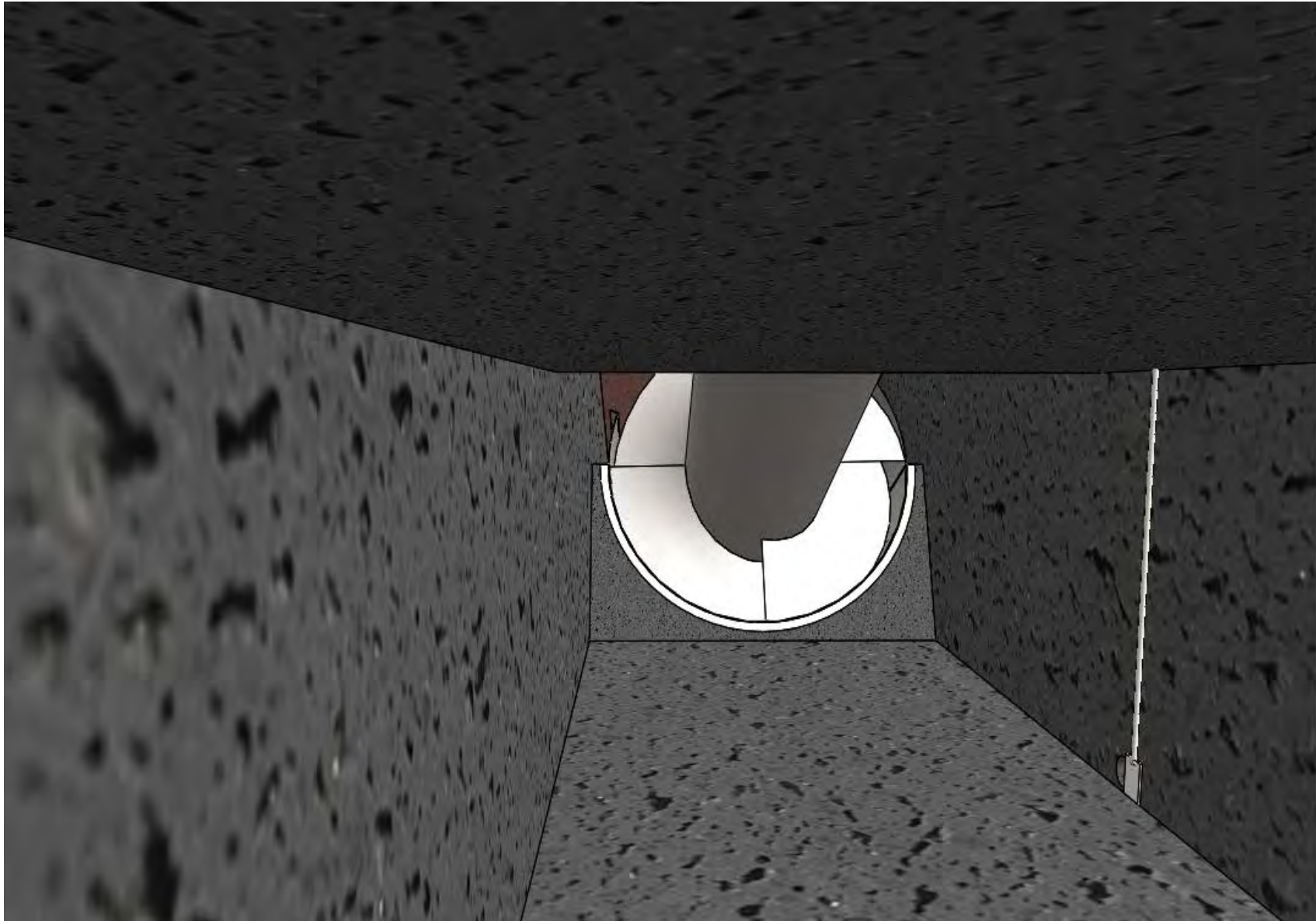
Large Visible Area



View (looking at floodwall) and Electrical Control Panels



View (if standing in tunnel beside sluice gates)



View (if standing in tunnel looking back at generator room)

